

New Developments

Family House LUCE

Moscow, Krestovozdvizhenskiy pereulok 4



Number of storeys **7**

Parking space **64**

Description

"Luce" is a deluxe family home with an Italian character and a Russian soul in the heart of the historic center. It is located on Krestovozdvizhensky Lane, in a quiet part of Arbat, within the Boulevard Ring.

The architectural concept was developed by the Italian firm Archea Associati, founded by Marco Casamonti (known for his design of the Antinori winery in Florence). The building harmoniously integrates the historic 1927 building, built in the Russian constructivist style, with the modern structure. The 5th to 7th floors comprise 46 residences ranging from 79 to 384 sq m and penthouses from 348 to 706 sq m with terraces. There are a maximum of three apartments per floor.

The Secret Garden (Giardino Secreto) was designed by the Russian studio Derevo Park. The garden creates the feeling of a private corner of nature within walking distance of the Kremlin.

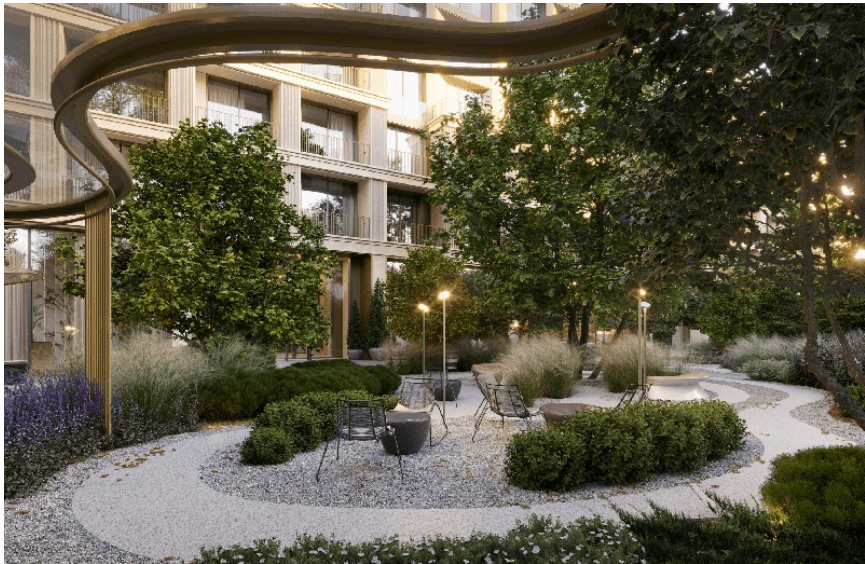
Residents have access to a music lounge with a grand piano in the western lobby, a library with a lounge area in the eastern lobby, a fitness and yoga studio, a beauty salon, a children's playroom and private tutoring room, and a meeting room. Entrust your daily chores to the concierge service. Security and video surveillance are available 24/7.

Within walking distance (5-10 minutes) are the Arbatskaya, Borovitskaya, Aleksandrovskiy Sad, and Lenin Library metro stations; the Kremlin, the Cathedral of Christ the Savior, the Russian State Library, the museum quarter with the Pushkin Museum, the Bolshoi and Maly Theaters, Zaryadye Park, and Arseny Morozov's mansion on Vozdvizhenka. Restaurants include Dr. Zhivago with a view of the Kremlin, Turandot, and others.

Photo



















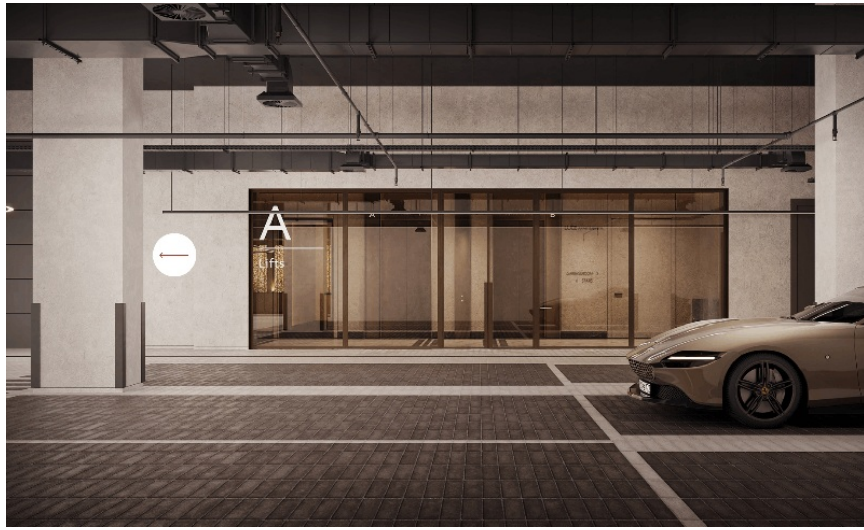
















Object on the map

